



STATEMENT OF QUALIFICATIONS

TOLM Group, Inc.

210 N Moose St, Morrilton | 5100 S Thompson St, Ste 214, Springdale
501) 354-6511 | www.tolmgrp.com | AR Contractors License 45540422

TABLE OF CONTENTS

FIRM OVERVIEW

PROJECT APPROACH & SCHEDULING

SCOPE OF SERVICES

KEY PERSONNEL

PAST PERFORMANCE

FIRM OVERVIEW



CAPABILITIES

TOLM Group is a full-service construction and engineering firm headquartered in Central Arkansas with additional offices in Springdale, Arkansas. We offer civil engineering and landscape architecture design services, construction management services, design-build, and general construction services to a wide variety of clients across the nation.

TOLM employs a team of experienced design professionals including licensed professional design engineers, landscape architects, and engineering interns. We deliver engineering with a construction focus which results in a smooth transition to successful execution in the field.

Our project management team has a diverse technical background that allows them to communicate effectively with different trades and disciplines. From other engineers and architects to general contractors and subcontractors, our communication and expertise ensures the success of every project.

CAPACITY

TOLM Group employs approximately 100 employees. Around 80 percent of those are field operations and the rest make up our technical staff with a small administrative staff behind the scenes. We maintain strong relationships with a variety of outside design consultant firms that we team with often to provide our clients with a well-rounded finished design.

Our team's current backlog provides for a stable future but still allows for additional workload to be acquired. We actively search for additional skilled staff to continue growing and taking on new clients to serve. We use the Primavera scheduling program to plan all project tasks to stay on schedule and successfully hit deadlines. With detailed scheduling and exceptional communication, TOLM Group has the capacity to handle many projects big and small for our clients.

You will find that TOLM Group has no material adverse changes in financial position, legal proceedings or judgments, incomplete contracts, or legal violations that will negatively impact on our ability to perform contractual commitments. Furthermore, TOLM has not been debarred from bidding and is not currently under consideration for debarment on any public contracts. Proof of required license, insurance, and bonding capacity is included at the end of this document in the Supplemental Materials section.

CORE COMPETENCIES

Our team has a strong background in construction management and land development as well as all the design that comes with it, including site design, roadway design, grading/drainage design, utilities design, and landscape architecture. These two core competencies allow us to be flexible and serve many different clients and project types.

UNIQUELY QUALIFIED

Unlike most firms, TOLM Group's design team works hand-in-hand and under the same roof as our construction teams. This gives us unique unparalleled perspective into the nuts and bolts of the construction industry. Our team observes and learns from the successes and failures in the design and construction of projects every day from our own construction teams.

A benefit to having a design team working in tandem with a construction team is the ability to produce accurate budgets and estimates. Our 'engineer estimates' are regularly in line with real-time bids and proposals from contractors. This provides a unique value to all our clients and projects.

Our licensed design staff hold certifications through the Design-Build Institute of America. This further provides a construction knowledge that is apparent in all our projects.

PROFESSIONAL CIVIL ENGINEERS

Licensure is the mark of a professional. It's a standard recognized by employers and their clients, by governments and by the public as an assurance of dedication, skill, and quality. Only a licensed engineer may prepare, sign, seal and submit engineering plans and



drawings to a public authority for approval, or seal engineering work for public and private clients (www.nspe.org).

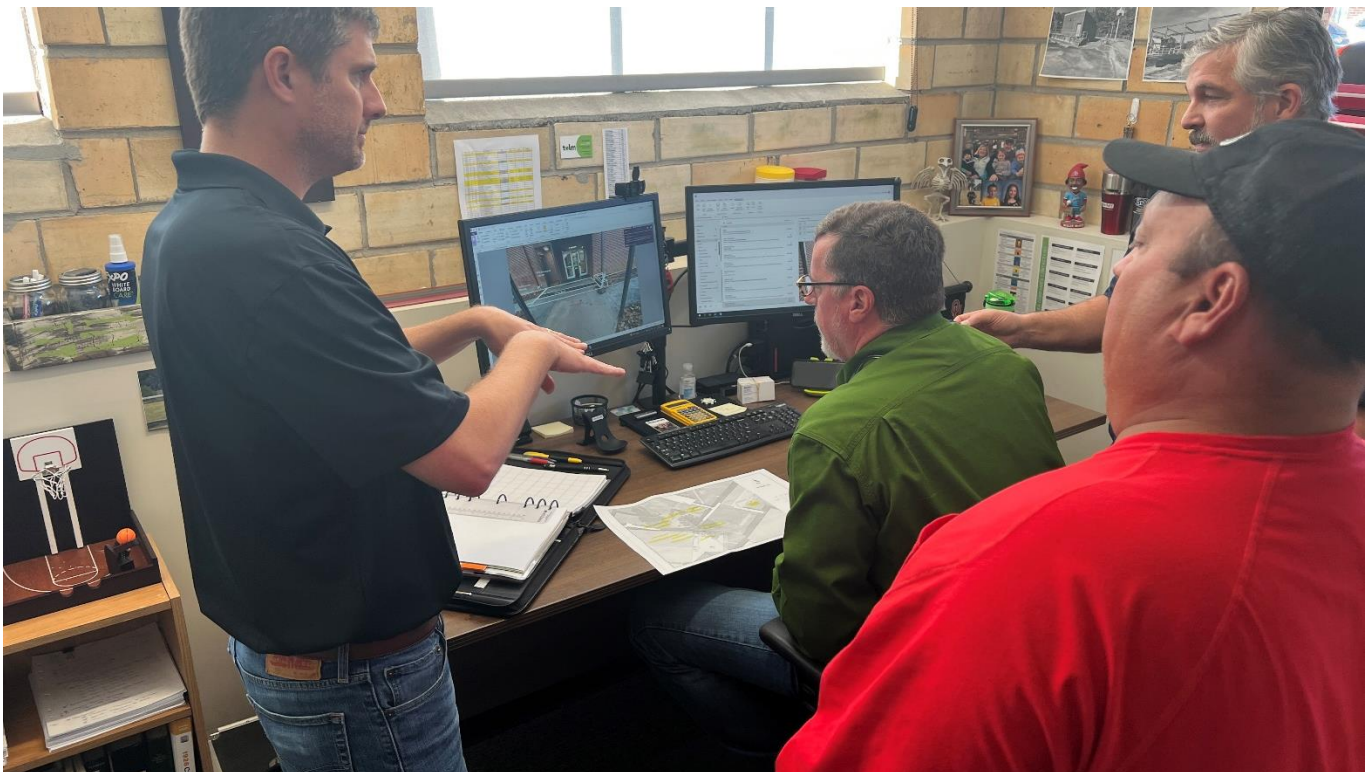
Crow's design team currently consists of four Professional Engineers. As a firm, TOLM holds a Certificate of Authorization to deliver stamped engineering plans and drawings and is also a Licensed Contractor, allowing us to not only take on construction of projects once design is complete, but also to provide a construction-ready design. Construction services are offered at the discretion of the client based on their needs.

DESIGN-BUILD PROFESSIONALS

The Design-Build Institute of America is the true authority on Design-Build Done Right®. Made of architectural, engineering, and construction professionals, as well as academics, students, and project owners, its members collaborate and innovate to deliver some of America's most successful projects (www.dbia.org).



TOLM is proud to be on the cutting edge of industry innovations, and to date, our design team includes one Design-Build Institute of America Certified DBIA Professional and three who hold the Associate Design-Build Professional Certification.



PROJECT APPROACH & SCHEDULING

We approach each project with a client-focused delivery mind-set. TOLM Group takes a proactive, team approach to ensure smooth project delivery. Adhering to the four fundamentals of project management – Safety, Quality, Schedule, and Cost Control, from estimating and planning through project close-out. We encourage collaboration, develop creative cost saving and schedule solutions, and resolve issues in the field before they impact the schedule.

PRE-CONSTRUCTION

Estimating:

- We perform a thorough and complete takeoff of all plans and specifications provided by the Owner or Owner Representative and confirm all intents and deliverables with the Owner.
- We engage qualified subcontractors and vendors pertinent to the scope of work and answer all pre-work questions they may have to minimize assumptions and secure accurate costs for construction.
- We convey all quality requirements to subcontractors and vendors engaged for pricing of the project and confirm with a scope walkthrough, ongoing discussions, and pre-job meetings.
- We provide for all project record keeping and documentation and ensure that project and field management have complied with Owner requirements for appropriate temporary facilities.
- The TOLM Group Design Team can also provide value engineering, development of supplemental plans, and/or additional shop drawings if requested by the Owner.

Scheduling:

- We will confirm a defined project schedule with the Owner and all consulting firms, accounting for all specific onsite work requirements and planning for potential variables such as lead times, manpower availability, possible overtime requirements, and required shutdown activity.
- We will discuss and develop a realistic schedule with the Owner to account for unforeseen conditions such as weather, owner requested changes in scope, and supply chain delays.
- Project managers will then engage the onsite superintendent assigned to your job to develop baseline and resource demand schedules to present to the Owner for approval.

Safety:

- We engage safety personnel to review activity sequencing and any special safety requirements related to the scope of work, such as shoring, fall protection, confined space considerations, etc.
- We review all environmental impacts on the scope of work, such as SWPP, asbestos, lead paint, etc. We then assign roles and responsibilities to the project and field management staff to address these environmental concerns, implement controls, and secure permits.
- We review and integrate any Owner safety criteria into the project-specific safety plan to be implemented onsite.
- We will coordinate a pre-construction safety meeting with project and field management, Owner representatives, and subcontractors to review all safety requirements.
- We will provide all safety related project record keeping tools and documents.

EXECUTION

Quality Control:

- We conduct weekly jobsite inspections and weekly subcontractor pre-installation meetings for quality assurance.
- We maintain a project record to circulate all information across project and field management personnel.
- We constantly communicate between field and office supervision to ensure critical work activities are accomplished correctly and on schedule.

- We convey any quality shortcomings to Owner representatives promptly and transparently, including the plan for correcting errors.
- We process all project records efficiently (ex: submittals, Requests for Information (RFIs), change requests/orders, etc.) and make sure all records are distributed to all appropriate project team members.

Schedule Control:

- We update project schedules at least twice monthly, create and circulate three-week schedules to relevant TOLM Group staff and Owner representatives weekly.
- We maintain an ongoing schedule commitment from all internal and external parties and ensure all daily notes confirm project records for submission.
- We track Grow Group staff, subcontractor, and vendor schedule performance for the project record.
- We track and communicate the project schedule status with the Owner on a weekly basis.

Cost Control:

- Through three-week schedules, we maintain cost efficiencies with vendor and supplier lead and delivery times.
- We constantly track the contract scope, update records, and communicate with the owner to identify potential changes to the original scope.
- We quickly and efficiently process change orders, pay applications, and contract status with the Owner, subcontractors, and vendors using our industry leading project management software.

Safety Management:

- We place a constant emphasis on required Jobsite Safety Analysis, Environmental Analysis, and Safety Observation Reports and assign them to the project records.
- We confirm weekly that performed work is meets environmental compliance standards.
- We engage with project and field management for weekly safety discussions as part of routine jobsite safety inspections.
- We coordinate critical step planning meetings with participation from project and field management, subcontractors, vendors, and Owner safety personnel ahead of all specialized work activity.
- We clearly mark and barricade jobsites to ensure safety of egress for the Owner and general public.

CLOSEOUT AND WARRANTY MANAGEMENT

- We document substantial completion and final completion dates for project records.
- We engage Owner representatives for walkthroughs to generate a punch list and issue punch list schedules, confirming all work has been corrected as needed.
- We issue a closeout schedule and catalogue all closeout documents pertinent to the completed project with the Owner's input.
- We complete, review, and submit all as-built project plans and documents to the Owner.
- We document and transmit all remaining material stock and materials to the Owner if applicable.
- We coordinate commissioning meetings and conduct trainings with Owner representatives as needed.
- We ensure and document that all safety measures and requirements are in place at time of turnover to the Owner.
- We confirm completion of environmental safety considerations of the project.
- We confirm the status of all subcontract and vendor invoices and provide all closeout documentation for prompt final billing to the Owner.

Your project team remains available to contact
for warranty items in perpetuity.

RELEVANT PAST PERFORMANCE



Cowell Steel Structures Expansion

JOB SITE LOCATION: Atkins, Arkansas

SCOPE OF WORK: TOLM consulted on the design and executed the site package, dirt work, concrete, and erection of 78,000 sq ft of additions at the Cowell Steel Structures headquarters in Atkins, Arkansas. The project included 26,000 sq ft expansion to the existing manufacturing facility, 41,000 sq ft new construction for additional manufacturing space, and an 8,000 sq ft administration building. All buildings are steel structures. The scope also included a 3,000 sq ft completed components shed for sheet metal storage.

OWNER REFERENCE:

Cowell Steel Structures
Luke Miller
T: (479) 747-2145
E: luke@cowellsteel.com

STAFF TEAM:

Brian Rohlman, PRINCIPAL
Josh Beck, PROJECT MANAGER
Josh Copeland, SUPERINTENDENT

INITIAL MOBILIZATION:

February 2016

COMPLETION DATE:

September 2017

AWARDED CONTRACT AMOUNT:

\$6,000,000

COMPLETED CONTRACT AMOUNT:

\$6,000,000





Petit Jean State Park Campground B

JOB SITE LOCATION: Petit Jean State Park, Arkansas

SCOPE OF WORK: TOLM Group demoed the existing campground and built a new one from the ground up, including new restrooms, water, sewer, utility infrastructure, and site grading.

OWNER REFERENCE:

Joe Buckley, Arkansas State Parks
Joe.buckley@arkansas.gov, 501-727-6504

STAFF TEAM:

Austin Foshee, Project Manager
Bruce Seaborn, General Superintendent

INITIAL MOBILIZATION / COMPLETION DATE:

May 2021 / In Progress

AWARDED CONTRACT AMOUNT:

\$1,559,050





Markham Square Water Quality

JOB SITE LOCATION: Conway, Arkansas

SCOPE OF WORK: The vision for Markham Square leverages site design to demonstrate a different future for storm water management in Conway. The park will transform a brownfield site plagued by flooding into a lively storm water park & cultural asset for the city.

OWNER REFERENCE:

Bart Castleberry, City of Conway
501-358-6810

STAFF TEAM:

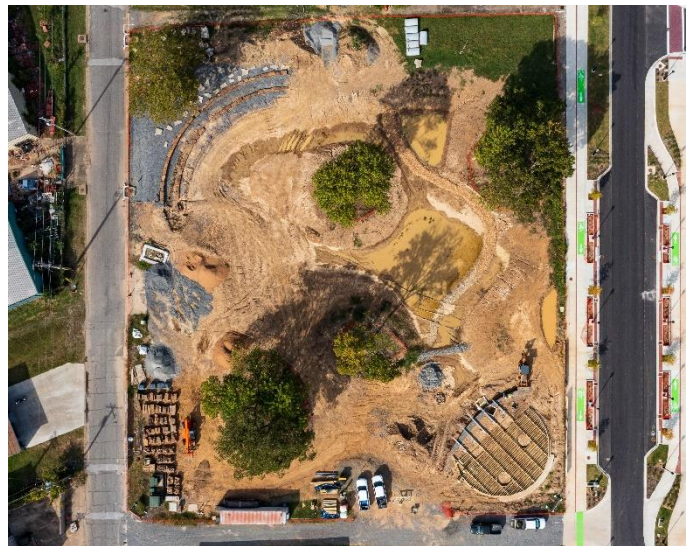
Austin Foshee, Project Manager
Bruce Seaborn, General Superintendent
Rocky Hill, Superintendent

INITIAL MOBILIZATION / COMPLETION DATE:

May 2021 / In Progress

AWARDED CONTRACT AMOUNT:

\$1,560,000





Pincrest Dry Kiln Design-Build

JOB SITE LOCATION: Menifee, Arkansas

SCOPE OF WORK: TOLM provided the design and construction for installation of a third dry kiln at the lumber mill located in Menifee, AR. TOLM also provided the design and construction for an 11,000-sf maintenance facility. Project scope also included demolition of existing maintenance facility.

OWNER REFERENCE:

Ryan Hendrix
T: (501) 354-1556
E: rhendrix@gbp.com

STAFF TEAM:

David Watkins, P.L.A., Project Manager
John Doyle, P.E., Civil Engineer of Record
Josh Copeland, Superintendent

INITIAL MOBILIZATION / COMPLETION DATE:

May 2018 / August 2019

AWARDED CONTRACT AMOUNT:

\$5,715,310





Jamison & Arch Street Modifications

JOB SITE LOCATION: Little Rock, Arkansas

SCOPE OF WORK: TOLM has been contracted to replace three existing pumps, install two new automatic bar screens, replace the current mixer, add stainless steel slide gates, and install a new diesel backup generator. In addition, we are replacing an existing gantry crane, overseeing various electric upgrades, and completing concrete and paving site work.

OWNER REFERENCE:

Austin Anderson
austin.anderson@hawkins-weir.com
501-353-8239

STAFF TEAM:

Josh Beck, P.E., Estimator
Bryan Lowe, Project Manager
John Dunn, Superintendent

INITIAL MOBILIZATION / COMPLETION DATE:

February 2022 / September 2022

AWARDED / COMPLETED CONTRACT AMOUNT:

\$2,888,415 / In Progress



Blanchard Springs Caverns Visitor Center Improvements Design-Build

JOB SITE LOCATION: Fifty Six, Arkansas

SCOPE OF WORK: TOLM Group provided Design-Build Services for the U.S. Forest Service's Blanchard Springs Caverns Visitor Information Center improvements. The scope of work included facilitating the design and executing the construction for the visitor center plaza entry with play area, parking area, and two access roads to the attraction.

OWNER REFERENCE:

Ouachita National Forest Jay Tobin 100 Reserve St
Hot Springs, AR 71901

T: (501) 321-5202

E: jtobin@fs.fed.us

STAFF TEAM:

Brian Rohlman, PRINCIPAL, PROJECT MANAGER
Josh Copeland, SUPERINTENDENT

INITIAL MOBILIZATION / COMPLETION DATE:

September 2017 / March 2018

AWARDED / COMPLETED CONTRACT AMOUNT:

\$1,082,000 / \$1,081,897





Dooley Creek Street and Appurtenances

JOB SITE LOCATION: Bradley, Arkansas

SCOPE OF WORK: TOLM Group provided highway improvements located at Lafayette County, Arkansas, including sheet piling installations for dewatering activities, removal and reinstallation of precast bridge structures, and raising and widening the highway.

OWNER REFERENCE:

Daniel Huett, ARDOT Resident Engineer #34
903-748-2339, Daniel.huett@ardot.gov

STAFF TEAM:

Austin Foshee, Project Manager
Josh Copeland, General Superintendent
Greg Church, Superintendent

INITIAL MOBILIZATION / COMPLETION DATE:

May 2020 / In Progress

AWARDED CONTRACT AMOUNT:

\$2,313,732





Hope Water Treatment Plant Improvements

JOB SITE LOCATION: Hope, Arkansas

SCOPE OF WORK: TOLM performed a demolition of the existing pump station and clearwell. A new pump station and clearwell were installed to replace the inadequate original ones. An additional clearwell was added to allow for scheduled down time for regular cleanings without halting production. The job consisted of earthwork, concrete, piping, electrical, and the construction of a permanent, on-site metal building.

OWNER REFERENCE:

Les Patterson

T: (870) 777-3000

E: lespat@hope-wl.com

STAFF TEAM:

Brian Rohlman, ESTIMATOR

Josh Beck, PROJECT MANAGER

John Doyle, PROJECT MANAGER

John Dunn, SUPERINTENDENT

INITIAL MOBILIZATION / SCHEDULED COMPLETE:

May 2018 / February 2021

AWARDED / COMPLETED CONTRACT AMOUNT:

\$10,517,759 / \$10,327,491





TOLM Group Corporate Headquarters Renovation

JOB SITE LOCATION: Morrilton, Arkansas

SCOPE OF WORK: TOLM self-contracted the design-build of our corporate headquarters in downtown Morrilton. The project included the total renovation/restoration of a 20,000 sq. ft. Coca Cola bottling plant that was originally erected in 1929. Our crew completely gutted the interior and restored many of the original details while also modernizing the space to meet the needs of our growing company. The finished product includes the addition of solar panels, 30+ workspaces, two conference rooms, a corporate event space, and an employee gym.

OWNER:

TOLM Group, Inc.
Brian Rohlman, President
T: (501) 354-6511
E: brohlman@crowgrp.com

STAFF TEAM:

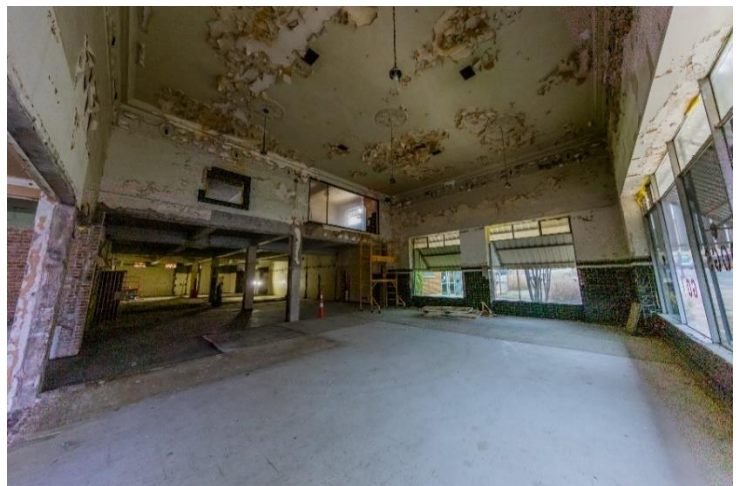
Brian Rohlman, PRINCIPAL, PROJECT MANAGER
Bruce Seaborn, SUPERINTENDENT

INITIAL MOBILIZATION / COMPLETION DATE:

January 2019 / August 2019

AWARDED / COMPLETED CONTRACT AMOUNT:

\$2.2MM / \$2.2MM





Case Farms Wastewater Treatment Plant Construction

JOB SITE LOCATION: Dudley, North Carolina

SCOPE OF WORK: TOLM provided construction management services for the construction of a 2 MGD wastewater pretreatment plant for the poultry processing facility in Goldsboro, NC. Major project components consist of a complete aeration system, HDPE lined earthen basins, sludge filter press, chemical feed system, and several pump stations and associated office, lab, storage buildings.

OWNER REFERENCE:

Mavon Lam, Complex Manager
(919) 580-3343, mlam@casefarms.com

STAFF TEAM:

Brian Rohlman, P.E., Principal, Estimator
John Doyle, P.E., Project Manager
Josh Beck, P.E., Project Manager

CONSTRUCTION START / COMPLETION:

March 2019 / May 2020

AWARDED / COMPLETED CONTRACT:

\$3,648,241 / \$3,884,220*

Engineer advised change orders.





Fourche Creek Environmental Quality Basin Modifications

JOB SITE LOCATION: Little Rock, Arkansas

SCOPE OF WORK: TOLM Group has been entrusted with the task of removing and disposing of all industrial waste, repairing a significant crack, removing the existing grout, adding concrete walls, adding a high-performance coating to the basin, enhancing the current piping system, and making electrical improvements to a currently operating waste-water treatment facilities EQ Basin. To date, TOLM has been able to successfully rehabilitate the basin all while causing minimal disruption to the facility's overall operations. Upon completion of this project Fourche Creeks ability to provide service to their clients will be significantly enhanced.

OWNER REFERENCE:

Cary Lipscomb, Engineering Manager
501.688.1431, cary.lipscomb@lrwra.com

STAFF TEAM:

Bryan Lowe, Project Manager
Bob Gordon, Senior Project Manager
Bruce Seaborn, General Superintendent
Barney Treece, Superintendent

CONSTRUCTION START / COMPLETION:

July 2021 / December 2021

AWARDED / COMPLETED CONTRACT:

\$1,098,000 / \$1,148,751 *Owner approved changes.





Sardis Water Improvements

JOB SITE LOCATION: Sheridan, Arkansas

SCOPE OF WORK: TOLM was contracted to construct the Ico Water Treatment Plant. Two groundwater well systems, two settling ponds, pumps, piping, and equipment as well as a 2,600 sqft building complete with a chemfeed laboratory were all included in the ground-up construction of this facility.

OWNER REFERENCE:

Roger Moren, General Manager
Sardis Water Association PWA
501.602.5393
rmoren@sardiswater.net

STAFF TEAM:

Josh Beck, P.E., Estimator
John Beck, Project Manager
Greg Smith, P.E., Sr. Project Manager
Bruce Seaborn, General Superintendent

CONSTRUCTION START / COMPLETION:

June 2020 / August 2021

AWARDED / COMPLETED CONTRACT:

\$4,198,000 / \$4,270,343





Tupelo Bayou Wastewater Treatment Plant Improvements

JOB SITE LOCATION: Conway, Arkansas

SCOPE OF WORK: TOLM was the general contractor completing construction of odor control improvements at the 65-acre TBWWTP. The project consisted of the installation of two separately located and operated odor control systems including construction of concrete equipment pads; installation of odor control vessels, blower fans, and related electrical controls; and installing a series of fiberglass reinforced plastic (FRP) ductwork and PVC ductwork. The completed system pulls air from high odor producing sources through the ductwork and into the odor control vessels, and the vessel processes absorb and eliminate hazardous odorous air.

OWNER REFERENCE:

Brett McDaniel, Engineering and Planning Manager
(501) 450-6050, brett.mcdaniel@conwaycorp.com

STAFF TEAM:

Brian Rohlman, P.E., Estimator
Josh Beck, P. E., Project Manager

CONSTRUCTION START / COMPLETION:

February 2017 / March 2018

AWARDED / COMPLETED CONTRACT:

\$3,198,552 / \$2,939,492



Central Arkansas Water Pump Station 1A Rehabilitation

JOB SITE LOCATION:

Little Rock, Arkansas

SCOPE OF WORK: Replacement of 5 pumping units, motors, and electrical control equipment; installation of building ventilation improvements; rehabilitation of building structural items; and other miscellaneous improvements.

OWNER REFERENCE:

Joe O’Hara, Senior Engineer
501.210.4980
joe.ohara@carkw.com

STAFF TEAM:

Brian Rohlman, P.E., Estimator
Josh Beck, P. E., Project Manager
John Dunn, Superintendent

**CONSTRUCTION START /
COMPLETION:**

March 2018 / August 2019

AWARDED / COMPLETED CONTRACT:

\$3,585,100 / \$3,543,465

